

# TransCam F500



*A tractor capable of transforming into a Robot*



**Introducing TransCam F500,** your ultimate solution for inspecting pressurized water pipelines with diameters of 20 inches and larger. Designed to meet the demands of pipeline networks that require precise leakage detection and accurate internal pipeline status recording, this innovative robot offers unparalleled capabilities.

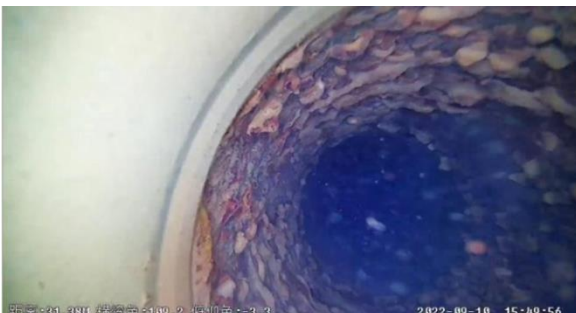
**Effortless Integration:** TransCam F500 seamlessly enters live pipelines through a hot tapping flange, autonomously navigating the pipeline with minimal disruption to regular supply services. Its modular design boasts a versatile video inspection system,

complemented by an optional Sonar module for advanced leak detection. With a pan & tilt camera head capable of capturing footage at distances of up to an impressive 1.2 miles (2 kilometers), operators can gather comprehensive pipeline condition data while maintaining precise control during inspections.

**Versatile Data Collection:** One standout feature of F500 is its ability to collect a wide range of pipeline condition information in a single deployment. Tailored for use in pipelines with reduced or no flowing water, it offers the flexibility to control its travel direction as needed. This adaptability makes it suitable for pipelines with a minimum diameter of DN500 and larger, accommodating access fittings as small as DN150.

## **Unparalleled Performance:**






TransCam F500 is the ultimate choice for pipeline inspection, offering unmatched accuracy, versatility, and reliability. Trust in its state-of-the-art technology to safeguard the integrity and performance of your critical water infrastructure.



# TransCam F500

A tractor capable of transforming into a Robot



 <p><b>Self-patrol robot</b></p>	Deployment range	from DN500 upwards
	Access fitting	Min.DN150
	Camera	Endless rotation, $\pm 90^\circ$ pitch angle
	Camera resolution	full HD; 2.1 Megapixels; 1920x1080P
	Camera lighting	LED
	Leak detection	Acoustic sensor
	Leak location accuracy	$\pm 0.5\text{m}$ ; 0.05l/min
	Water pressure accuracy	0.1 bar
	Probe	1 piece, $\phi$ 130mm
	Required water speed	0-3m/s (travel w/o flow)
	Protection class	IP68 up to 10m water depth
	Integrated sonde	$\pm 0.5\text{m}$ accuracy; Max. 10m depth
 <p><b>Robot detection unit</b></p>	Patent launch system	$\phi 220 \times H 450\text{mm}$ ; 8kg
	Pipe material	All pipe
	Bend pipe	Travel single bend $\leq 45^\circ$ ; travel multi bends $\leq 270^\circ$
 <p><b>Cable drum</b></p>	Drive	motor-driven
	Cable length	2000m
	Cable tension	300kg
	Winding aid	yes
	Meter counter	$\pm 1\%$ accuracy, min. scale: 1cm
	Power	Battery, 8h; power cord (optional)
	Communication	Wi-Fi connection to control pad
	Protection class	IP65
 <p><b>Control Pad</b></p>	OS	Android
	Display	10.1 inch
	Storage	128G
	Battery	8h
	Size & weight	102x153x63mm, 280g
<p><b>Option</b></p>	Communication	Bluetooth 6m
 <p><b>Sonar probe</b></p>	Protection class	IP68, up to 10m water depth
	Integrated sonde	$\pm 0.5\text{m}$ accuracy; Max. 8m depth
	Frequency 1	667KHz
	Frequency 2	2MHz
	Scanning angle 1	$7.5 \times 2.6^\circ$
	Scanning angle 2	$2.5 \times 0.9^\circ$
	Min. monitor distance	50mm
Max. monitor distance	2MHz : 6m 667KHz : 12m	

Product appearance and specifications are subject to change without notice.